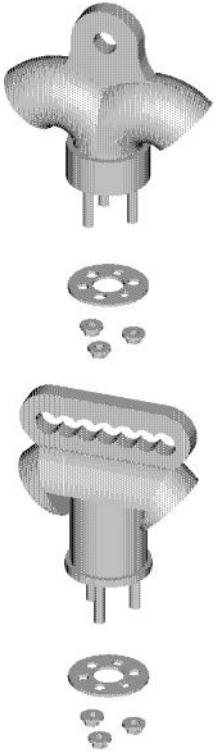


Span Wire One Way

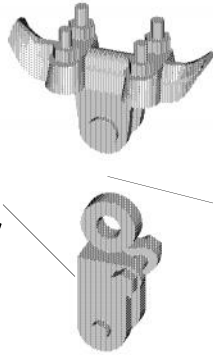
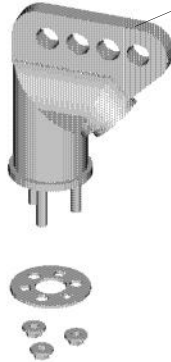
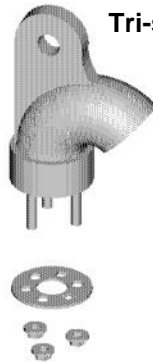
Wire Entrance Heads

Tri-stud 2-way: 1 hole or comb



Balance Adjuster

Tri-stud: 1 hole or 4 hole



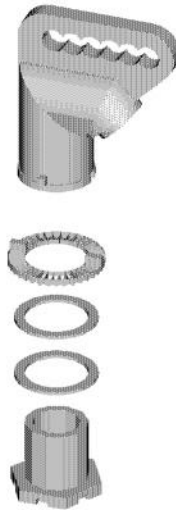
Hanger

See Span Wire Drop-Tether section for drop tether options

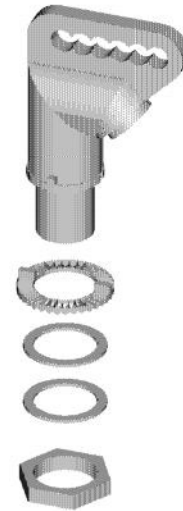
All multi-hole alum 1-way WEH (exc Lg opening) have 4-hole fin pattern

All iron/bronze WEH have 6-hole comb pattern

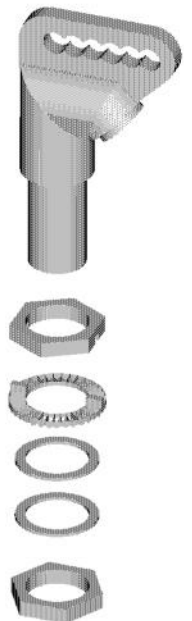
Female



Female: w/allthread



Male

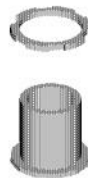


Note: Available with 2' tethered drop pipe: Threaded bottom (options K,L) or Tristud bottom (options V,W)

Bottom Closures



Molded Plastic Sealing Cap



Alum Closure w/locking



Plastic Plug

Note: Tether clamp assemblies available in separate section of this catalog.

Tristud WEH with adapter fin for drop tether available — Please see Drop Tether Assemblies Section



Options:

Traffic Parts, Inc.

1. Color

Y=Yellow B=Gloss Blk F=Flat Blk
 G=Dk Grn L=Light Grn Z=Bronze
 X=Special N=None (natural finish)

2. Material

(Hgr,Bal Adj,WEH, Lock Nipple)
 F=Iron Z=Iron w/Brass Lock Nipple
 A=Alum S=Alum w/SS bushings
 B=Brass C=Brass w/Iron Lock Nipple

3. Hanger

N=None

Option#>	1	2	3	4	5	6	7	8
Size	6"	6"	6"	6"	9"	9"	9"	9"
Bolt Style	U	U	L	L	U	U	L	L
Hdw Matl	Plt	SS	Plt	SS	Plt	SS	Plt	SS
Hgr Matl	Iron or Alum				Iron or Brnz			

4. Balance Adjuster

N=None E=EZ Balance Adjuster

Option #>	1	2	3	4
Eye Bolt Matl	Stl	Stl	Brs	Brs
Hdwr Matl	Plt	SS	Plt	SS

5. Wire Entr Head (#=No grommet)

(See table below) * Built in shurlock

6. Bottom Closure

1=Plastic Plug N=None X=Special
 2=Alum Closure w/lockring
 3=Molded Plastic Sealing Cap

7. Shurlock/Tristud Washr Matl

For Threaded: 1=Plastic 2=Aluminum
 3=Bronze N=None
 For Tristud: P=Plated S=Stainless

WEH Option #>		T	A#	B#	U	C	V	W	F	G	H	J	K	L	1	2	3	4	5
Type		Tristud							Female						Male				
WEH type	1-way, 4 hole	X																	
	1-way, 1 hole		X																
	2-way, 1 hole			X															
	2-way, comb					X													
	Female,comb						X		X		X		X		X				
	Male,comb															X	X	X	
	Lg Open,comb				X			X		X		X		X					X
	Shurlock Ring	*	*	*	*	*	*	*	X	*		*	X	X	X	X			*
	Wshr,Gasket								X	X			X	X	X	X		X	X
	Locknipple								X	X			X	X					
	AllThrd Nipl														X				X
	1 Locknut														X	X			X
	Notched Lcknut,w/2ss															X			
	2 Locknuts																X	X	
	Lead Washer																X		
	Split Ring																		X
	Cotter Pin														X	X	X	X	X
	2' Drop pipe w/tether						X	X					X	X					

SPAN1	-				-														
Option Category ➔	1	2	3	4	5	6	7	8	9	10	11	12	13	14	15	16	17	18	19