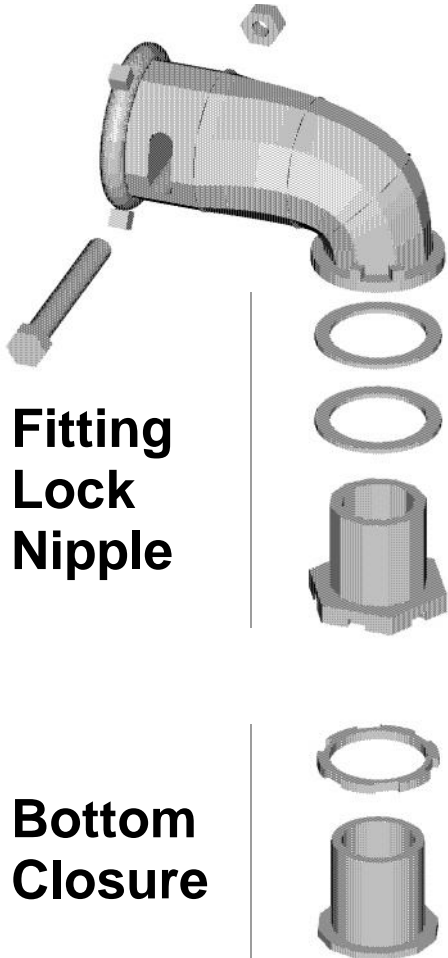
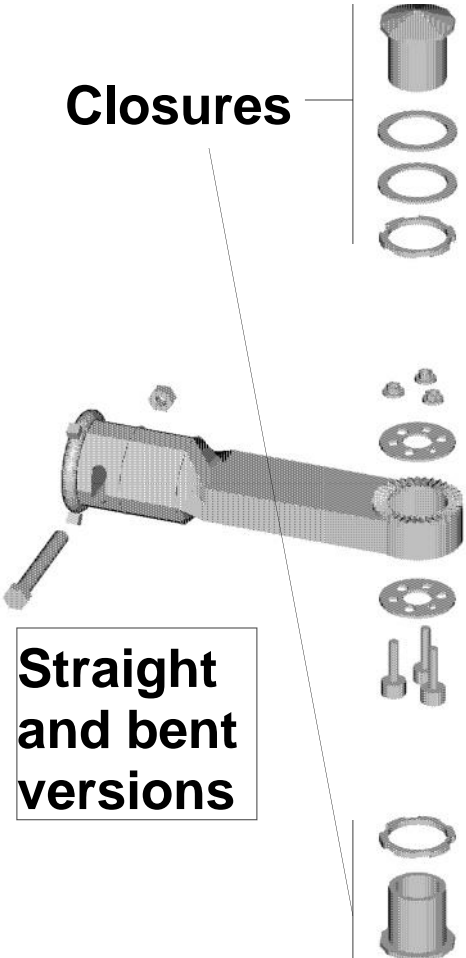


Mast Arm Rigid, Free-Swing

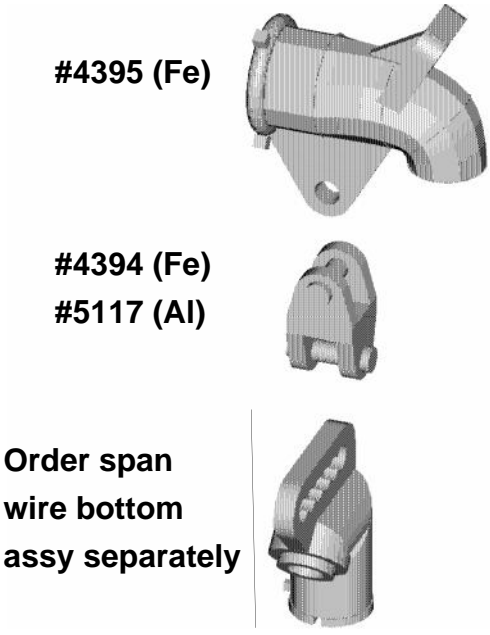
Mast End Rigid



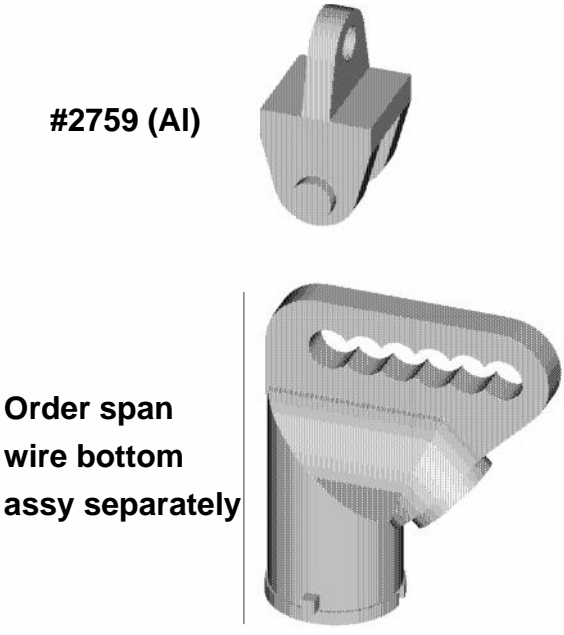
Mid Mast Rigid



Mast End Free Swing



Mid Mast Free Swing



Configuration

1. Type

- E=Elbow Plumbizer
- F=Elbow Plumbizer,Articulated
- V=Elevator Plumbizer,Straight
- W=Elevator Plumbizer,Bent
- A=Articulated Tube Saddle,Pltd hdwr
- S=Articulated Tube Saddle,SS hdwr

2. Color

- Y=Yellow B=Gloss Blk F=Flat Blk
- G=Dk Grn L=Light Grn Z=Bronze
- X=Special N=None (natural finish)

3. Material (Plumbizer only)

- F=Iron A=Aluminum B=Brass

4. Signal Attachment

- N=None (for use with drop pipe)
- F= 2" Lock Nipple, Iron
- A= 2" Lock Nipple, Alum
- B= 2" Lock Nipple, Brass
- X= All Thread with Nut, Iron
- T= Tri-Stud, Alum

5. Bottom Closure

- (1 Set for Elbows, 2 Sets for others)
- N=None 1=Plastic Plug
- 2=Alum Closure w/lockring
- 3=Molded Plastic Sealing Cap

Note: Cluster configurations (such as "dog house", or multiway) are possible for all mast arm assemblies. Please see Cluster section for ordering codes. Order a cluster assembly and a separate mast arm assembly.

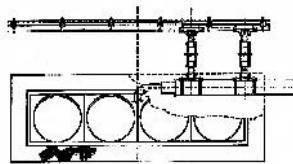
MASTR

Option Category →

-				-			
1	2	3	4	5	6		

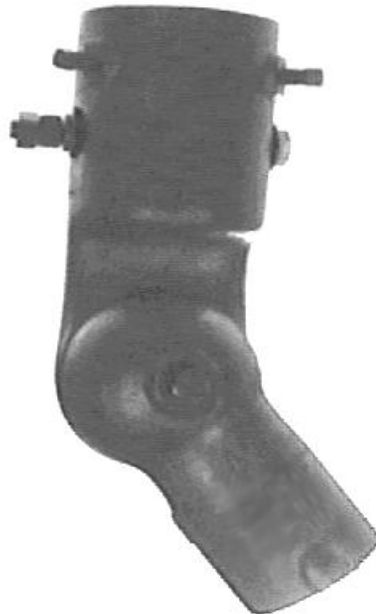
Mast Arm Wind Dampeners

Damps mast arm motion when mounted horizontally along the top end of the mast arm



#7269 16" x 48"
#7608 16" x 66"

Articulated Plumbizer



Articulated Saddle

